



WERETYK

VERTIGO BALANCE & HEARING

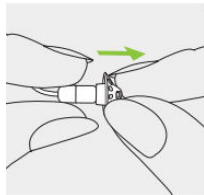
286 McDermot Ave. Wpg, MB R3B 0T2

P: 204-339-1869 • F: 204-942-0867

Hearing Aid User Quick Notes

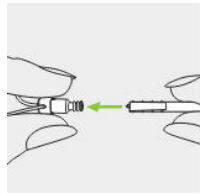
What can go wrong with the hearing aid?

1. Charger not plugged in (no green light on back of charger)
 - If “back green light” not on, wire or power is issue.
2. Hearing aid not charging well/dead hearing aid (No blinking light)
3. Internal issue within the hearing aid (constant red blinking light)
4. Something wrong with hearing aid wire (blinking green, no sound)
5. **Wax in the WAX GUARD (Need to pull dome off and change wax guard)**
 - Change wax guard and dome every 2-3 months or as needed
 - Wax guards are the little black sticks with white cap on end
 - Pull stick out of case
 - Place empty end into hearing aid that has current wax guard
 - Replace with new wax guard on other end of stick into hearing aid
 - Replace dome



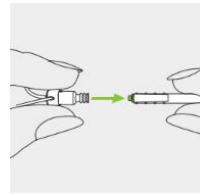
Step 1

Remove dome



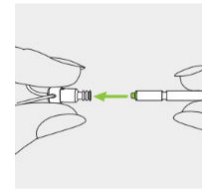
Step 2

Stick into white cap



Step 3

Remove



Step 4

Flip

Replace

How to check if hearing aid is working well?

1. Hearing aid is not sounding the same (sounds quiet or falling out)
2. Close hearing aid in hand to check for feedback (whistling)
3. Hearing aid is constantly blinking red (outside of charger, requires service)
4. Hearing aid is blinking red after many hours of being in charger.

Note: Hearing aid lights are like street lights when put in charger:

RED= at least an hour of use, or needs service (if constant blinking in morning)

YELLOW= have lots of time before requiring charge

GREEN= fully charged, no issues (can blink or steady green)